

## Magnetverschlüsse Flach



### Glatte Oberfläche



Z 121013  
10x2 mm



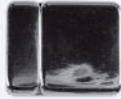
Z 121014  
15x2 mm



Z 121015  
25x2 mm



chrom matt



chrom



H 14



H 1420, neon



H 1423, neon



H 1424



H 1421, neon



H1422



15-002



15-004



15-001



15-003



15-0836



15-0754



15-0771



15-007



15-008



15-006



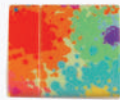
15-0823



15-0816



15-0787



15-0713



15-0396



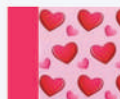
15-005



15-7901



15-7902



15-7903



15-7904



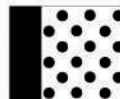
15-7905



15-7906



15-7907



15-7908

auch mit Ihrem Logo und Design möglich

### Strukturoberfläche



Z 121005  
5x2 mm



Z 121020  
20x2 mm



Z 121030  
30x2 mm



Z 121040  
40x2 mm

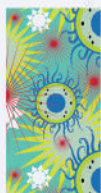


Z 121052  
52x2 mm

### PVC Band beschichtet



6011



6015



6012



6017



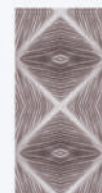
6016



6014



6007



6008



6018



6013



6010



6006



6005



6001



6002



6004



auch mit Ihrem Logo und Design möglich